







90 Greenhow Street

Walkley • Sheffield • S6 3TP

Asking Price £265,000

Located in the heart of Walkley and a short walk from Bolehills Park is a superb, deceptively spacious 4-bedroom mid terraced property which benefits from extra space over the passageway. Stylishly presented throughout featuring a modern kitchen and bathroom, double glazing, combination gas central heating and attractive rear garden. The property enters into a bright and airy lounge presented with bold, modern tones, decorative coving and grey carpet. Offering a pleasant garden aspect at the rear is a spacious dining kitchen providing space for a dining table and cellar access. The kitchen is fitted with white shaker style units, wood effect worktops and tiled splashbacks. Features a ceramic sink, integrated oven, four ring gas hob and extractor with space and plumbing for further freestanding appliances. The first floor comprises of 3 double bedrooms all presented with neutral walls and grey carpet. The bathroom is equipped with modern 3-piece white suite, overhead shower, glass screen, tiled floor and partially tiled contrasting walls. Stairs rise to the second-floor main bedroom, generously proportioned, and stylishly presented incorporating Dormer window and built in storage. Externally a forecourt and steps lead to the front entrance. A communal passageway leads to the rear garden, a raised lawn enclosed with brick wall and fencing, with a path leading to an attractive seating area and outbuilding. Complemented by mature planting. Greenhow Street is well-placed for local shops and amenities including a growing café culture, pubs and restaurants. There are good access links to the city centre, hospitals and the universities.





- Stone Fronted Mid Terraced Property
- Located in the Heart of Walkley, S6
- 4 Double Bedrooms
- Deceptively Spacious Accommodation
- Modern Kitchen & Bathroom

- Stylishly Presented Throughout
- Attractive Rear Garden & Outhouse
- Walking Distance of Bolehills Park
- Freehold
- Council Tax Band A, EPC TBC

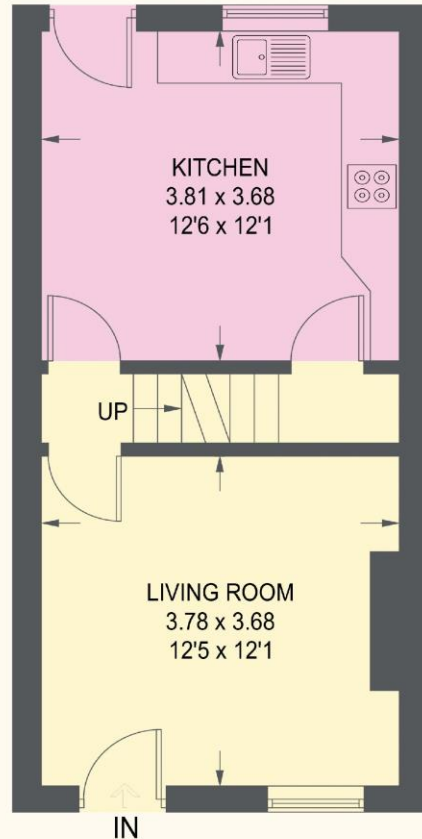


90 GREENHOW STREET

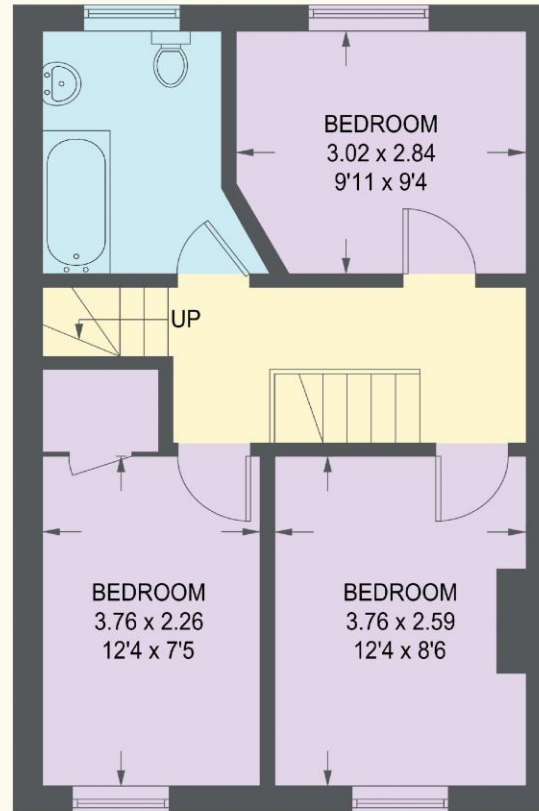
APPROXIMATE GROSS INTERNAL AREA = 95.4 SQ M / 1027 SQ FT

CELLAR = 14.6 SQ M / 157 SQ FT

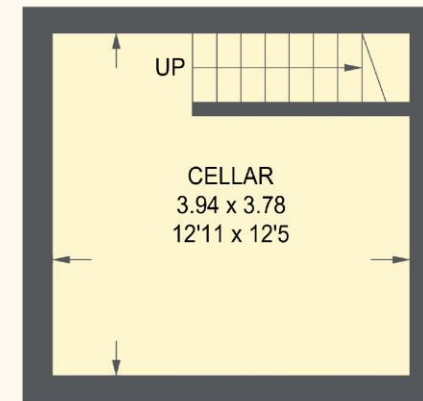
TOTAL = 110 SQ M / 1184 SQ FT



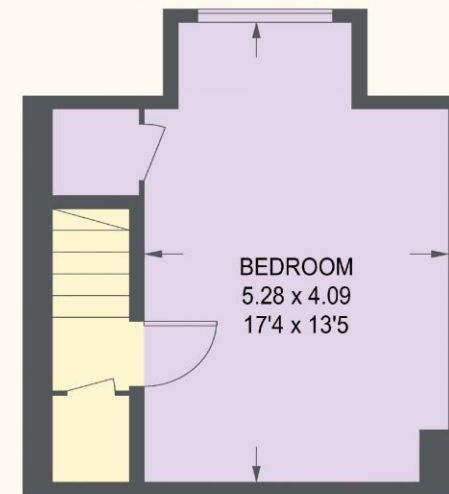
GROUND FLOOR
32.5 SQ M / 350 SQ FT



FIRST FLOOR
43.5 SQ M / 468 SQ FT



CELLAR
14.6 SQ M / 157 SQ FT



SECOND FLOOR
19.4 SQ M / 209 SQ FT

Illustration for identification purposes only, measurements are approximate, not to scale.

